



4 Crellins Court, Grosvenor Road, Douglas, IM1 3AU

Asking Price £539,000

This brand new development in Douglas offers four spacious three-story townhouses situated at the end of a peaceful cul-de-sac in the heart of the town center. The developers have meticulously designed these townhouses to seamlessly blend with the existing Victorian architecture. At first glance, they could easily be mistaken for traditional Victorian homes. The properties are not only built with modern materials but also adhere to exacting standards. They boast a very high level of specification, including increased thermal insulation beyond standard requirements. The townhouses feature efficient gas-fired underfloor heating and a pressurized hot water system, ensuring comfort and convenience for residents. Each townhouse comprises a large open-plan lounge, a well-fitted breakfast kitchen, four bedrooms, three bathrooms, an additional office, and a nursery. The front gardens are laid with Astroturf for easy maintenance, and harlequin flagged pathways enhance the overall appeal. The boundary walls and railings at the front entrance maintain a Victorian feel, contributing to the high-end quality of these properties. In summary, these townhouses offer a harmonious blend of Victorian charm and modern comfort, making them an attractive choice for residents seeking a central location in Douglas.

4 Crellins Court, Grosvenor Road, Douglas, IM1 3AU

LOCATION

From the Rosemont traffic lights travel south along Bucks Road and turn right onto Kensington Road. Take the next right onto Raphael Road and right again onto Grosvenor Road and the property can be found at the end of the cul de sac.

VESTIBULE

HALL Cloakroom.

OPEN PLAN LOUNGE/KITCHEN/DINER

FIRST FLOOR

BEDROOM 12' 0" x 10' 0" (3.65m x 3.05m)

ENSUITE

BEDROOM 12' 0" x 8' 8" (3.65m x 2.64m)

ENSUITE

SECOND FLOOR

BEDROOM 11' 8" x 10' 0" (3.55m x 3.05m)

BATHROOM

BEDROOM 11' 8" x 10' 3" (3.55m x 3.12m)

OFFICE 5' 8" x 5' 6" (1.73m x 1.68m)

OUTSIDE

Astroturf to front. Paved area to rear for parking.

SERVICES

Mains water, electricity and drainage. Gas central heating.

VIEWING

Viewing is strictly by appointment through CHRYSTALS. Please inform us if you are unable to keep appointments.



4 Crellins Court, 1 Grosvenor Road, Douglas, IM1 3AU

POSSESSION

Vacant possession on completion of purchase. The company do not hold themselves responsible for any expenses which may be incurred in visiting the same should it prove unsuitable or have been let, sold or withdrawn. DISCLAIMER - Notice is hereby given that these particulars, although believed to be correct do not form part of an offer or a contract. Neither the Vendor nor Chrystals, nor any person in their employment, makes or has the authority to make any representation or warranty in relation to the property. The Agents whilst endeavouring to ensure complete accuracy, cannot accept liability for any error or errors in the particulars stated, and a prospective purchaser should rely upon his or her own enquiries and inspection. All Statements contained in these particulars as to this property are made without responsibility on the part of Chrystals or the vendors or lessors.

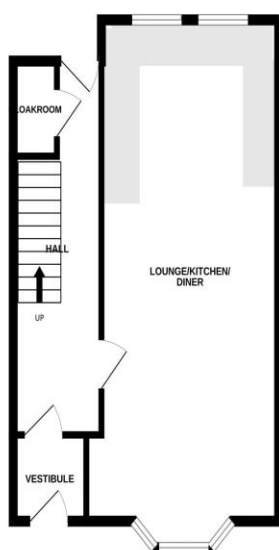
N.B. The furniture will be included at this asking price.



4 Crellins Court, 1 Grosvenor Road, Douglas, IM1 3AU



GROUND FLOOR



1ST FLOOR



2ND FLOOR



Measurements are approximate. Not to scale. Illustrative purposes only.
Made with Metropix ©2024

Since 1854

DOUGLAS
31 Victoria Street
Douglas IM1 2SE
T. 01624 623778
E. douglas@chrystals.co.im

PORT ERIN
23 Station Road
Port Erin IM9 6RA
T. 01624 833903
E. porterin@chrystals.co.im

COMMERCIAL
Douglas Office: 01624 625100, commercial@chrystals.co.im
RENTALS
Douglas Office: 01624 625300, douglasrentals@chrystals.co.im



Directors: Shane Magee M.R.I.C.S.; Neil Taggart BSc (Hons), M.R.I.C.S.; Joney Kerruish BSc (Hons), M.R.I.C.S.; Dafydd Lewis BSc (Hons), M.R.I.C.S., MA (Cantab), Dip Surv Prac.; Consultants: Keith Kerruish
Registered in the Isle of Man No. 34808, Chrystal Bros, Stott & Kerruish Ltd. Trading as Chrystals. Registered Office, 31 Victoria Street, Douglas, Isle of Man IM1 2SE.